

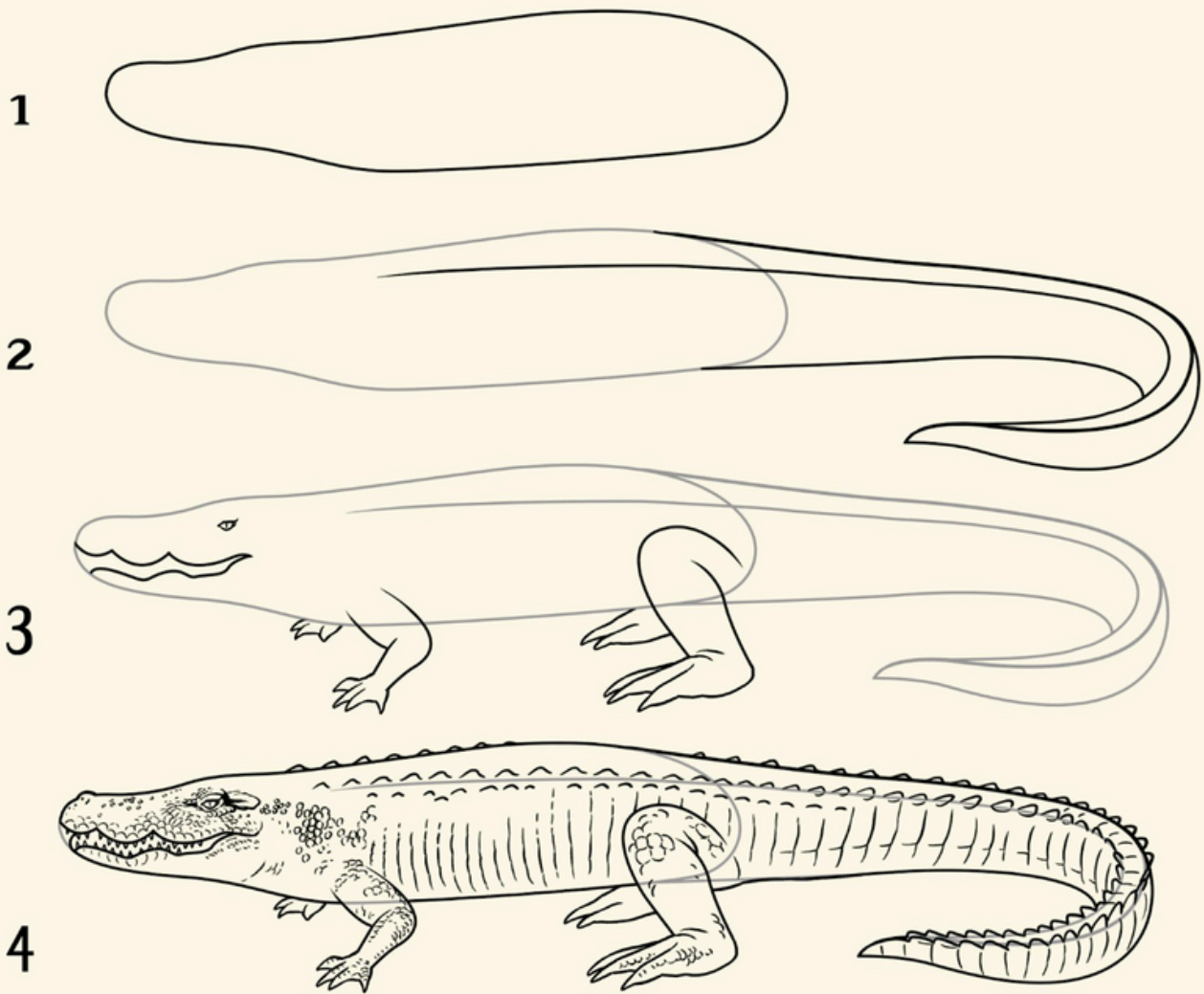


Oceanarium Activity pack

Keep curious minds busy this summer with
three activity spreads taken from Teagan
White's *Oceanarium Activity Book!*

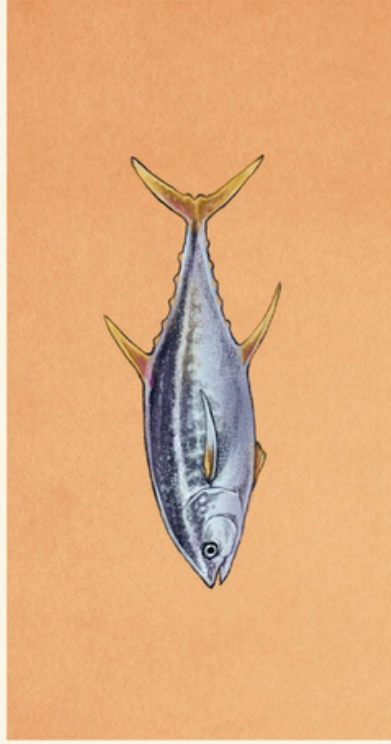
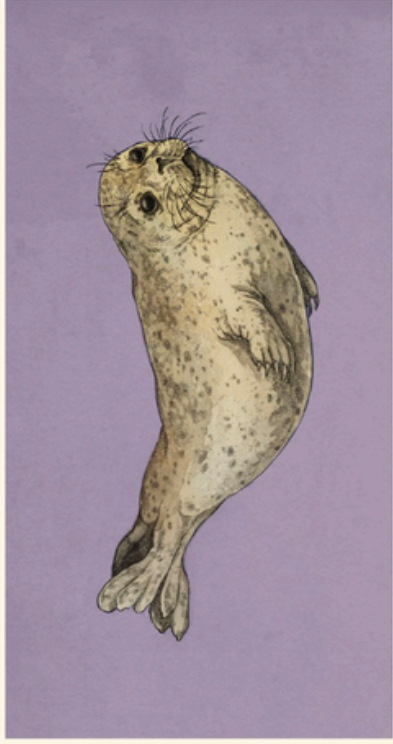
Answer spreads follow at the end of the
pack.

How to draw a crocodile



Try it yourself

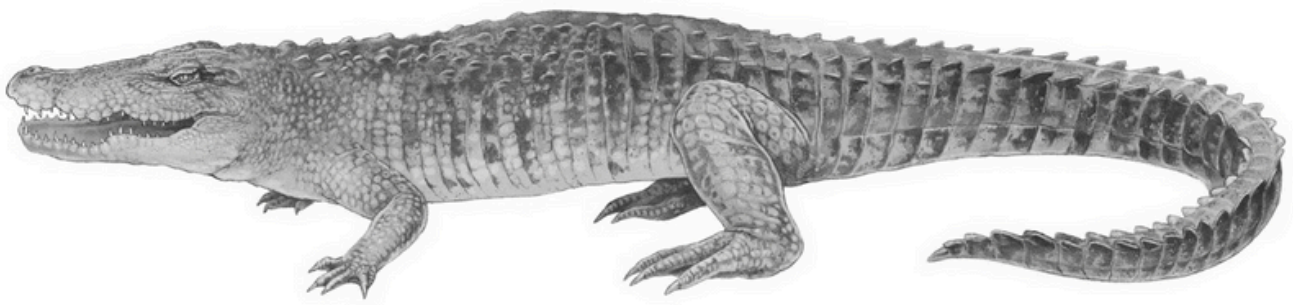
Match the predators to their prey



Spot the difference

(there are 10 differences to spot)





Saltwater crocodile

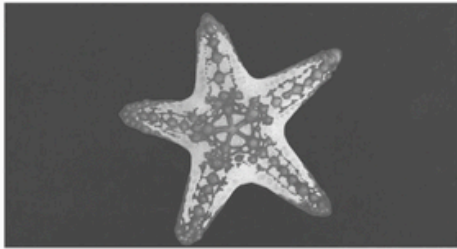
Crocodylus porosus

Length: Up to 3.5m (females)

5.2m (males)

Saltwater crocodiles are the biggest living reptiles in the world. With massive, powerful bodies, including a formidable set of jaws and a long muscular tail, these creatures are capable of ambushing large prey such as zebras, buffalo and even sharks. They are often found in estuaries where the river meets the sea.

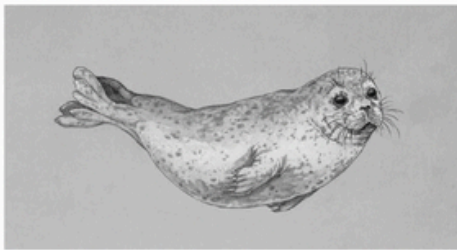
Answers



Crimson knobbed starfish



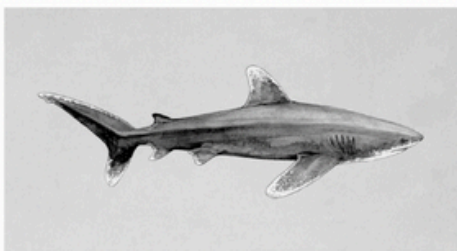
Common mussel



Harbour seal



Herring fish

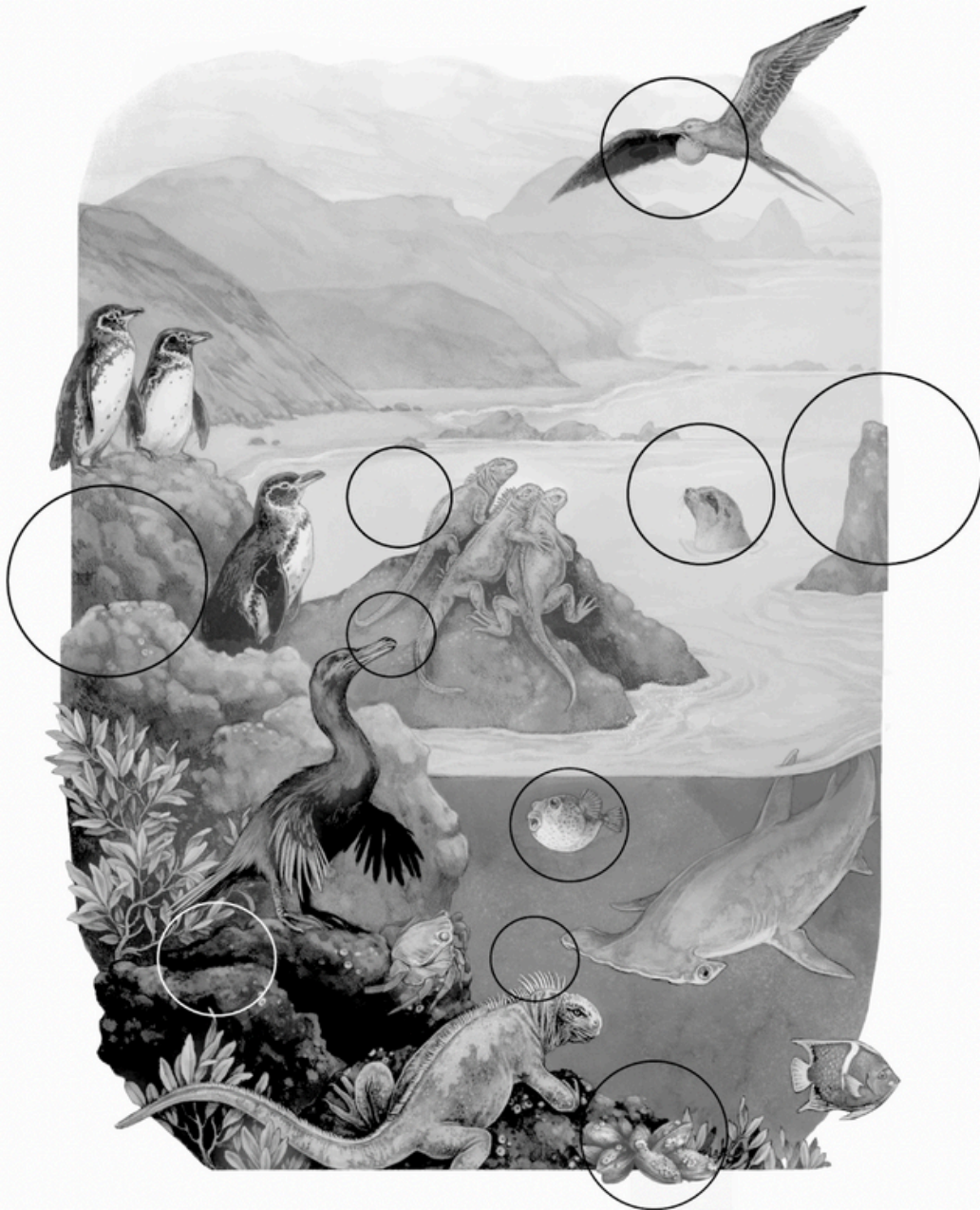


Oceanic whitetip



Yellowfin tuna

Answers



Galápagos Islands

The Galápagos Islands are home to a range of unique species, many of which occur nowhere else on Earth. Around 3,000 marine species live and feed in the Galápagos region. As a result of this impressive number, the islands are now a marine protected area (MPA). By limiting fishing and protecting wildlife, the MPA aims to protect the unique nature of this incredible corner of the world.